

TSC

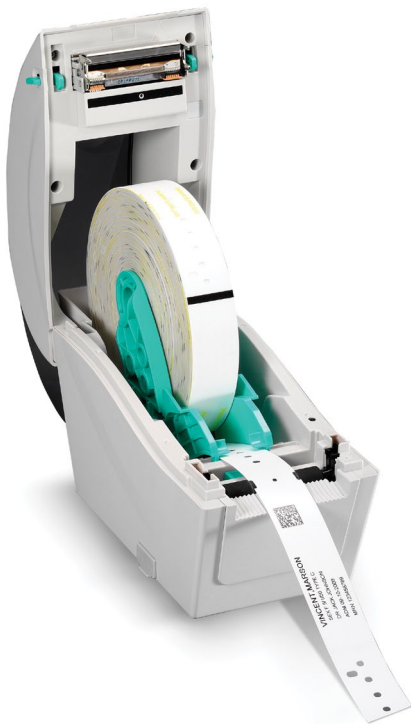
The Smarter Choice.

CELEBRATING 20 YEARS



TDP-324W SERIES – Desktop Direct Thermal Wristband Printers

EVERY FEATURE YOU NEED FOR MEDICAL AND ENTERTAINMENT WRISTBAND PRINTING



KEY FEATURES

- High resolution 300 dpi printer, also available in 203 dpi resolutions
- Can use any roll of wristbands from any supplier
- Save up to 50% on cost of wristbands
- Designed to hold 6.5" OD wristbands
- Front LCD display
- High quality double-walled clamshell design
- Easy media loading
- Up to 127 mm (5") per second print speed
- microSD Flash memory expansion up to 4 GB
- Ethernet and USB 2.0 connectivity standard
- Optional peel-off module, cutter module and down-time keyboard interface
- Can be programmed to work without a computer attached
- Cerner Certified and works in any hospital system

APPLICATIONS

- **Healthcare**
 - Patient ID Tracking
 - Hospital Admissions
 - Hospital Nursery
- **Entertainment & Hospitality**
 - Amusement Parks
 - Water Parks
 - Event Admissions
 - Night Club Age Verification
- **Other Markets**
 - Law Enforcement
 - Crowd Control
 - Animal ID
 - Restricted Area Access

TDP-324W SERIES – Desktop Direct Thermal Wristband Printers



TSC
The Smarter Choice.

CELEBRATING 20 YEARS

PRINTER MODEL	TDP-225W	TDP-324W
Resolution	8 dots/mm (203 DPI)	12 dots/mm (300 DPI)
Printing method	Direct Thermal	
Max. print speed	127 mm (5")/second	102 mm (4")/second
Max. print width	52 mm (2.05")	48 mm (1.89")
Max. print length	2,286 mm (90")	1,016 mm (40")
Enclosure	Clamshell design with wall mount hole at the bottom cover	
Physical dimension	109 mm (W) x 210 mm (H) x 260 mm (D) 4.29" (W) x 8.27" (H) x 10.24" (D)	
Weight	1.2 kg (2.65 lbs)	
Label roll capacity	165 mm (6.5") OD	
Processor	32-bit RISC CPU	
Memory	<ul style="list-style-type: none"> • 4 MB Flash memory • 8 MB SDRAM • microSD card reader for Flash memory expansion, up to 4 GB 	
Interface	<ul style="list-style-type: none"> • USB 2.0 • Internal Ethernet, 10/100 Mbps • USB host, for scanner or PC keyboard (factory option) 	
Power	External universal switching power supply <ul style="list-style-type: none"> • Input: AC 100-240V, 1A, 47-63Hz • Output: DC 24V, 2.08A, 50W 	
LCD	Graphic type, 128 x 64 pixels, with back light	
Operation switch, button LED	1 power switch, 1 feed button & 1 LED (3 colors: green, amber & red)	
Sensors	<ul style="list-style-type: none"> • Transmissive gap sensor • Black mark reflective sensor (position adjustable) • Head open sensor 	
Real time clock	Standard	
Internal fonts	<ul style="list-style-type: none"> • 8 alpha-numeric bitmap fonts • Monotype Image® true type font engine with one CG Triumvirate Bold Condensed scalable font 	
Bar code	<ul style="list-style-type: none"> • 1D bar code Code 39, Code 93, Code 128UCC, Code 128 subsets A, B, C, Codabar, Interleave 2 of 5, EAN-8, EAN-13, EAN-128, UPC-A, UPC-E, EAN and UPC 2 (5) digits add-on, MSI, PLESSEY, POSTNET, China POST, GS1 DataBar, Code 11 • 2D bar code PDF-417, Maxicode, DataMatrix, QR code, Aztec 	
Font and barcode rotation	0, 90, 180, 270 degree	
Printer language	TSPL-EZ™	
Media type	Continuous, die-cut, black mark, fan-fold, notched, wristband (outside wound)	
Media width	15 ~ 52 mm (0.59" ~ 2.05")	
Media thickness	0.06 ~ 0.19 mm (2.36 ~ 7.48 mil)	
Media core diameter	25.4 mm (1")	
Label length	10 ~ 2,286 mm (0.39" ~ 90")	10 ~ 1,016 mm (0.39" ~ 40")
Environment condition	Operation: 5 ~ 40°C, 25 ~ 85% non-condensing Storage: -40 ~ 60°C, 10~ 90% non-condensing	
Safety regulation	FCC Class B, CE Class B, C-Tick Class B, UL, CUL, TÜV/Safety, CCC	
Environmental concern	Comply with RoHS, WEEE	
Accessories	<ul style="list-style-type: none"> • Windows labeling software CD disk • Quick start guide • USB cable • Power cord • External universal switching power supply 	
Limited warranty	<ul style="list-style-type: none"> • Printer: 2 years • Print head: 25 km (1 million inches) or 12 months which comes first • Platen: 50 km (2 million inches) or 12 months which comes first 	
Factory options	<ul style="list-style-type: none"> • USB host, for scanner or PC keyboard 	
Dealer options	<ul style="list-style-type: none"> • Peel-off module • Guillotine cutter (full cut and partial cut) 	
User options	N/A	

CORPORATE HEADQUARTERS

TSC Auto ID Technology Co., Ltd.

Tel: +886 2 2218 6789

E-mail: apac_sales@tscprinters.com

LI ZE PLANT

TSC Auto ID Technology Co., Ltd.

Tel: +886 3 990 6677

E-mail: apac_sales@tscprinters.com

AMERICAS

TSC Auto ID Technology America Inc.

Corporate Office

Tel: +1 909 525 9779

E-mail: americas_sales@tscprinters.com

Orlando Office

Tel: +1 407 704 8918

E-mail: americas_sales@tscprinters.com

CANADA

TSC Auto ID Technology America Inc.

Tel: +1 909 525 9779

E-mail: americas_sales@tscprinters.com

MEXICO

TSC Mexico Representative Office

Tel: +52 (33) 3836 6682

E-mail: americas_sales@tscprinters.com

BRAZIL

TSC Brazil Representative Office

Tel: +55 (11) 9597 8098

E-mail: americas_sales@tscprinters.com

EMEA

TSC Auto ID Technology EMEA GmbH

Tel: +49 (0) 8106 37979 00

E-mail: emea_sales@tscprinters.com

RUSSIA

TSC Auto ID Technology EMEA GmbH

Tel: +7 915 422 8889

E-mail: emea_sales@tscprinters.com

MIDDLE EAST

TSC Auto ID Technology ME Ltd, FZE

Tel: +971 4 2533 069

E-mail: emea_sales@tscprinters.com

ASIA PACIFIC

TSC Auto ID Technology Co., Ltd.

Tel: +886 2 2218 6789

E-mail: apac_sales@tscprinters.com

VIETNAM

Global vision Co., Ltd.

Tel: +84 38 18 18 66

E-mail: sales@tglobalvision.com.vn

TSC® is a trademark of TSC Auto ID Technology Co., Ltd.
TSC Auto ID Technology Co., Ltd. is an ISO 9001/14001 registered company.
© 2014 TSC Auto ID Technology Co., Ltd.
Product models and Specifications are subject to change without notice.
Contact your TSC sales representative for specific information.